



Cochlear™ Baha® Start for kids

**Small sounds can
help them achieve
big things**



Because children deserve the best start

Children deserve the best start in life, to develop their communication and educational skills and form strong connections with others. Children's lives are full of possibility, and hearing loss should not be an obstacle.

Early access to sound is proven to make a difference in helping children learn, engage and fully experience the richness of their environment.¹ Cochlear™ Baha® Start may be the solution your child needs to access this important early sound to develop language and learn to listen. It is designed to deliver sound to support your child to develop on par with their hearing peers.^{2,3}

Baha Start is a bone conduction solution for children with conductive hearing loss, mixed hearing loss and single-sided sensorineural deafness (SSD). It can help your child hear until they're ready for an implantable solution. Understanding more about your child's hearing loss and the benefits of bone conduction solutions can be a great way for you and your child to begin this hearing journey together.



Understanding your child's hearing loss

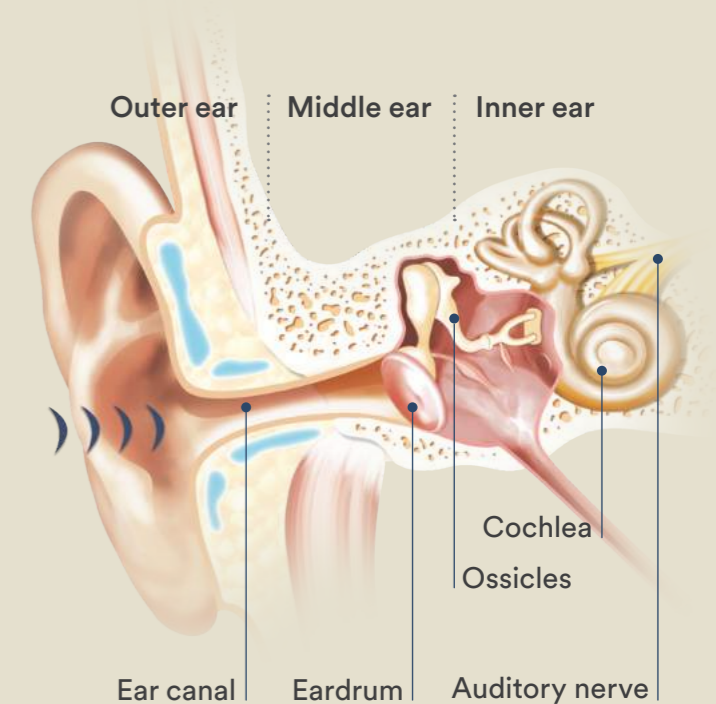
Sound is important in helping us understand the world around us. It helps your child acquire speech and language and gives you and your child possibility to share sound experiences such as laughing, learning, singing and playing. Understanding your child's hearing loss and possible solutions can encourage them, and you, to get the most out of a hearing life.

There are three types of hearing loss, which originates from different parts of the ear:

Conductive hearing loss occurs in the outer and/or middle ear, where sound moving to the inner ear is blocked. It can be caused by chronic ear infections, conditions such as Microtia and Atresia, and can be associated with syndromes such as Down, Goldenhar and Treacher Collins. It can occur in one or both ears.

Sensorineural hearing loss occurs in the inner ear and can occur in one or both ears. If one ear is affected with profound hearing loss while the other ear has normal hearing, it is known as single-sided sensorineural deafness (SSD). This type of hearing loss can be caused by viral infections, congenital hearing loss, adverse reaction to medications and head or ear injuries.

Mixed hearing loss is a combination of both conductive and sensorineural hearing loss.



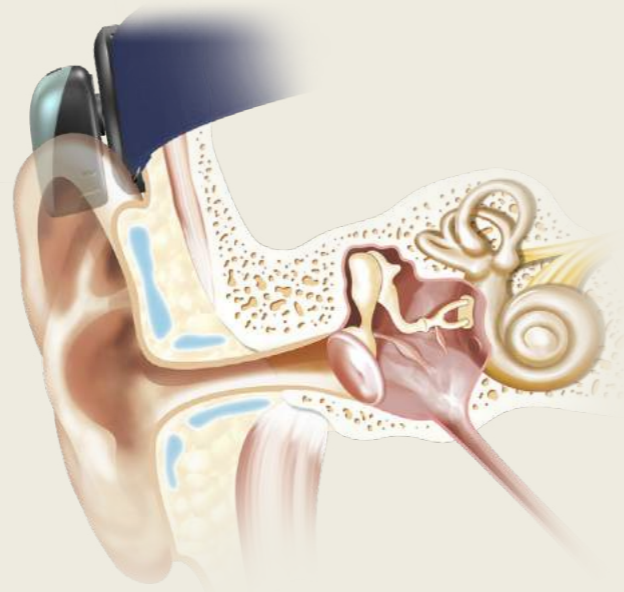
Cochlear bone conduction solutions have helped thousands of children with hearing loss, all over the world, to hear and communicate.⁴

The benefits of bone conduction

Bone conduction is a scientifically proven treatment for conductive hearing loss, mixed hearing loss and single-sided sensorineural deafness.⁵ Through vibrations of the skull, the process transmits sound to the inner ear bypassing the blocked parts of the outer and/or middle ear or reroutes sound from the ear with profound hearing loss to the hearing one.

How bone conduction works:

1. The sound processor captures sound in the air.
2. It turns the sound into vibrations and sends them to the bone.
3. The bone carries these vibrations through to your child's inner ear.



Hearing through bone conduction may have a positive and immediate impact on your child's hearing.⁶





Small never sounded this powerful

In a hearing solution, the clarity and quality of the sound your child will experience is important – but so is its size. The sound quality and clarity may affect your child’s potential hearing ability and enjoyment of sound, but both size and sound may affect their willingness to use their hearing device.

The Baha 6 Max is a first-of-its-kind device: a “premium-power” sound processor. It’s got the same small form factor of other premium devices⁷ but has the output levels of a power device. This additional power, together with other great features, are designed to give children access to clear, rich and natural sound⁸; to help them learn, explore and fully experience the richness of their sound environment.

All in a discreet size that doesn’t get in the way.

Baha 6 Max colour options



Mint



Black



Brown



Copper



Silver



Blonde

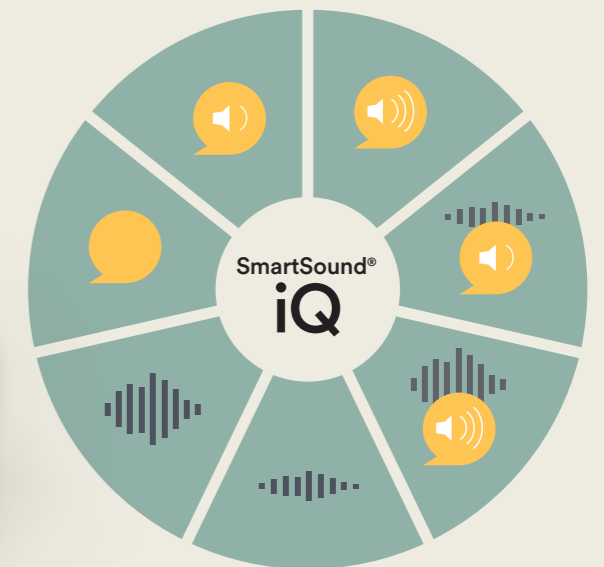


Power to hear the little things in life

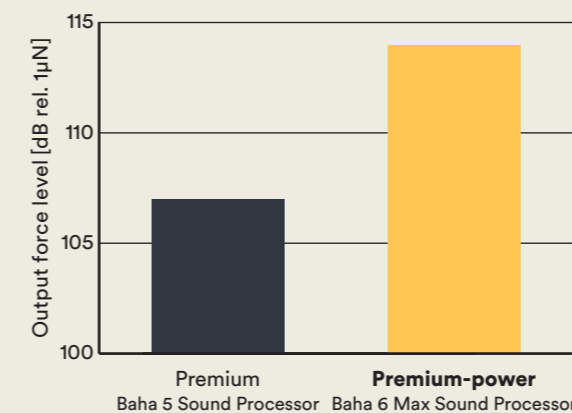
The extra power of the Baha 6 Max gives children access to a broader and more dynamic range of sounds.⁹ This is especially important for your child when they are in difficult listening environments, as a large dynamic range has been shown in studies to improve peoples' ability to understand speech in noise.⁹ It also provides capacity should hearing loss worsen over time.

SmartSound® iQ signal processing

The Baha 6 Max also features SmartSound® iQ technology that automatically defines your child's sound environment and makes small adjustments to optimise the sound.¹³ This helps to focus in on speech, reduce noise and increase comfort to deliver a clear signal for your child to interpret.¹⁴



Average maximum power output measured at 0.5, 1, 2 and 4 kHz



The Baha 6 Max is a small device that delivers 7 dB more power than the previous generation.¹⁰⁻¹²

The smallest connections can make the biggest difference

In some environments, like school, hearing every word takes on even more importance. A significant difference has been found in working memory and in dictation tests between children with hearing loss and normal hearing children.¹⁵ Providing access to sound gives your child an opportunity to excel in the classroom.¹⁵

The Baha 6 Max easily connects to wireless accessories and FM systems that help bring the teacher's voice even closer and make their words even clearer.

At home your child may already connect with people and the world through phones, tablets and other connected devices. The Baha 6 Max will give your child a real advantage by connecting them directly to music, games and video chats from a compatible Apple or Android™ device.

Actual size



LED visual indicator



True Wireless™ devices

Baha Smart App



* The Baha 6 Max is compatible with Apple and Android devices. For full compatibility information visit www.cochlear.com/compatibility.



Be part of your child's hearing experience

The Baha 6 Max has great child focused features that can give you confidence your child is connected to hearing. Using the Baha Smart App*, you can easily monitor and track your child's hearing experience as well as adjust the sound.

An LED light on the sound processor will give you, or your child's teacher for example, a quick confirmation that the sound processor is on and that it's connected.

Strength to make a splash

Kids are kids, so they'll always be on some kind of adventure. Thankfully the Baha 6 Max is designed to be durable and features a high rating of water and dust protection.† There is also an optional tamper resistant battery door to keep inquisitive fingers out of places they shouldn't be.

* The Cochlear Baha Smart App is available on App Store and Google Play. For compatibility information, visit www.cochlear.com/compatibility.

† The Cochlear Baha 6 Max Sound Processor, with battery compartment excluded, is dust and water resistant to level IP68 of the International Standard IEC60529. Refer to the relevant user guide for more information.





The first step to better hearing

Early identification of hearing loss and access to sound is important for your child's communication development¹, so it's best to address their hearing loss as soon as possible. With Baha Start, even the youngest of children can get started on their journey to better hearing.

The Cochlear Baha Softband is a comfortable and easy-to-wear headband that holds the sound processor in place. It is created specifically for babies and toddlers and is the ideal first step in bone conduction hearing.

The Softband can be used with one sound processor, or with two if your child has bilateral hearing loss. It's available in a variety of fun colours and patterns, and features a built-in safety release.

1. Adjustable strap
2. Safety release

Softband colour options



‘Lucy started using the Baha Softband when she was just 3 months old, and she’s been wearing it ever since. With her Softband she should be able to accomplish anything she wants.’

Alexandra, mother of Lucy
Cochlear Baha Softband recipient



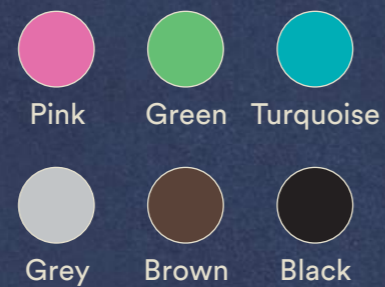
- 1
- 2

Growing up in a world of sound

As your child continues to grow, Baha Start grows with them. At some stage your child may feel it's time to move on from a Softband. If that's the case, or for older children joining the Baha Start journey, the discreet Baha SoundArc is another great wearing option.

1. Soft silicone tips
2. Adjustable band
3. Multiple sizes available

Soft tip colour options



The SoundArc has a sleek look that kids will love, with a variety of soft coloured tips for your child to choose from. It's lightweight, practical and, like a pair of sunglasses, easy to put on and take off. Your child can wear it with one or two sound processors, and it fits securely and comfortably in place.



The next step on your child's hearing journey

Baha Start can give your child the opportunity to grow up with sound and help provide the hearing they need to develop and grow. Eventually, there may come a time when your child will be ready to move on to a hearing implant – a more permanent and effective solution¹⁶ - that may further improve their hearing¹⁷ and chances of experiencing bone conduction hearing to the fullest.

A study showed that an implant provides a higher-quality signal compared to a Softband and that this can promote long-term academic, social and vocational benefits in addition to immediate improvement in communication.¹⁸ The study also reported that an implant improves the recognition of familiar words and the speed of learning new words.¹⁸

Some children might also prefer the discreetness and ease-of-use of an implant system or simply feel they have outgrown the Baha Start options and are ready for the next step.

When your child is ready for an implant, you should meet with your hearing health professional and discuss the different options available.



With you through every sound

For the last 40 years, we've been working with parents and hearing health professionals to transform the way people treat and understand hearing loss. Together, we have been innovating and bringing children all over the globe into the world of sound.

From the start of your child's hearing journey we are there to support you and your child on the path to better hearing. We also want to invite you and your child to join a supportive and inspiring community of other Cochlear recipients to hear their stories and learn from their experience.

With Cochlear, your child will be supported by global operations in over 180 countries, all over the world.

Join a community of Cochlear recipients all over the world on www.cochlear.com

Hear now. And always


As the global leader in implantable hearing solutions, Cochlear is dedicated to helping people with moderate to profound hearing loss experience a life full of hearing. We have provided more than 600,000 implantable devices, helping people of all ages to hear and connect with life's opportunities.

We aim to give people the best lifelong hearing experience and access to innovative future technologies. We collaborate with leading clinical, research and support networks.

That's why more people choose Cochlear than any other hearing implant company.

References

1. Yoshinaga-Itano C. Early Intervention after universal neo-natal hearing screening: impact on outcomes. *Dev Disabil Res Rev.* 2003;9(4):252-66.
2. Lieu JC. Speech-Language and Educational Consequences of Unilateral Hearing Loss in Children. *Arch Otolaryngol Head Neck Surg.* 2004;130(5):524-30.
3. Kesser BW, Krook K, Gray LC. Impact of Unilateral Conductive Hearing Loss Due to Aural Atresia on Academic Performance in Children. *Laryngoscope.* 2013;123:2270-2275.
4. Cochlear sales data correct as of June 2020.
5. Dun CA, Faber HT, de Wolf MJ, Cremers CW, HolMK. An overview of different systems: the bone anchored hearing aid. *Adv Otorhinolaryngol.* 2011;71:22-31.
6. Priwin C, Jönsson R, Hultcrantz M, Granström G. BAHA in children and adolescents with unilateral or bilateral conductive hearing loss: a study of outcome. *Int J Pediatr Otorhinolaryngol.* 2007;71(1):135-145.
7. Land J. Comparison tech data Baha 6 Max, legacy and competition. Cochlear Bone Anchored Solutions AB, Sweden. 2020; D1762475.
8. Hoffman J. Subjective evaluation of clear rich and natural sound. Cochlear Bone Anchored Solutions AB, Sweden. 2020; D1788013.
9. Gawliczek T, Wimmer W, Caversaccio M, Kompis M. Influence of maximum power output on speech understanding with bone anchored hearing systems. *Acta Otolaryngol.* 2020;140(3):225-229.
10. Leung B. Baha 6 Max Connect Datasheet. Cochlear Bone Anchored Solutions AB, Sweden. 2020; D1760797.
11. Land J. Baha 5 Sound Processor Connect System Datasheet. Cochlear Bone Anchored Solutions AB, Sweden. 2019; 630908.
12. Land J. Baha 5 Power Connect Datasheet. Cochlear Bone Anchored Solutions AB, Sweden. 2019; D801286.
13. Flynn MC. Smart and Small – innovative technologies behind the Cochlear Baha 5 Sound Processor. Cochlear Bone Anchored Solutions AB, Sweden. 2015; 629761.
14. Hedin A. Summary of the Cochlear™ Baha® 5 Clinical Development. Cochlear Bone Anchored solutions AB, Sweden. 2015; D842564.
15. Di Stadio A, Dipietro L, Toffano R, et al. Working Memory Function in Children with Single Side Deafness Using a Bone-Anchored Hearing Implant: A Case-Control Study. *Audiol Neurootol.* 2018;23(4):238-244.
16. Hol MKS, Snik AFM, Mylanus EAM, Cremers CWRJ. Long-term Results of Bone-Anchored Hearing Aid Recipients Who Had Previously Used Air-Conduction Hearing Aids. *Arch Otolaryngol Head Neck Surg.* 2005;131(4):321-325.
17. Hol MK, Nelissen RC, Agterberg MJ, Cremers CW, Snik AF. Comparison between a new implantable transcutaneous bone conductor and percutaneous bone-conduction hearing implant. *Otol Neurotol.* 2013;34(6):1071-1075.
18. Pittman AL. Bone Conduction Amplification in Children: Stimulation via a Percutaneous Abutment versus a Transcutaneous Softband. *Ear Hear.* 2019;40(6):1307-1315.

 Cochlear Bone Anchored Solutions AB, Konstruktionsvägen 14, 435 33 Mölnlycke, Sweden
Tel: +46 31 792 44 00, Fax: +46 31 792 46 95

Regional Offices

Cochlear Ltd, (ABN 96 002 618 073), 1 University Avenue, Macquarie University, NSW 2109 Australia
Tel: +61 2 9428 6555, Fax: +61 2 9428 6352

Cochlear Americas, 10350 Park Meadows Drive, Lone Tree, CO 80124, USA
Tel: +1 303 790 9010, Fax: +1 303 792 9025

Cochlear AG, EMEA Headquarters, Peter Merian-Weg 4, 4052 Basel, Switzerland
Tel: +41 61 205 8204, Fax: +41 61 205 8205

Cochlear Latinoamerica, S. A., International Business Park
Building 3835, Office 403 Panama Pacifico, Panama
Tel: +507 830 6220, Fax: +507 830 6218

www.cochlear.com

Please seek advice from your health professional about treatments for hearing loss. Outcomes may vary, and your health professional will advise you about the factors which could affect your outcome. Always read the instructions for use. Not all products are available in all countries. Please contact your local Cochlear representative for product information. In Australia, Baha bone conduction implant systems are intended for the treatment of moderate to profound hearing loss.

Views expressed are those of the individual. Consult your health professional to determine if you are a candidate for Cochlear technology. Any testimonial featured is not intended for a New Zealand audience.

This material is not intended for use in the United States and Canada. In the United States and Canada there may be indications and considerations that differ to those presented in this material.

Cochlear, Baha, 科利耳, コクレア, 코클리어, Hear now. And always, SmartSound, the elliptical logo, and marks bearing an ® or ™ symbol, are either trademarks or registered trademarks of Cochlear Bone Anchored Solutions AB or Cochlear Limited (unless otherwise noted).

Google Play and the Google Play logo are trademarks of Google LLC. Android is a trademark of Google LLC. The Android robot is reproduced or modified from work created and shared by Google and used according to terms described in the Creative Commons 3.0 Attribution License.

Apple, the Apple logo, iPhone, iPad and iPod are trademarks of Apple Inc., registered in the U.S. and other countries. App Store is a service mark of Apple Inc.

© Cochlear Bone Anchored Solutions AB 2020. All rights reserved. 2020-10

D1760358-V1